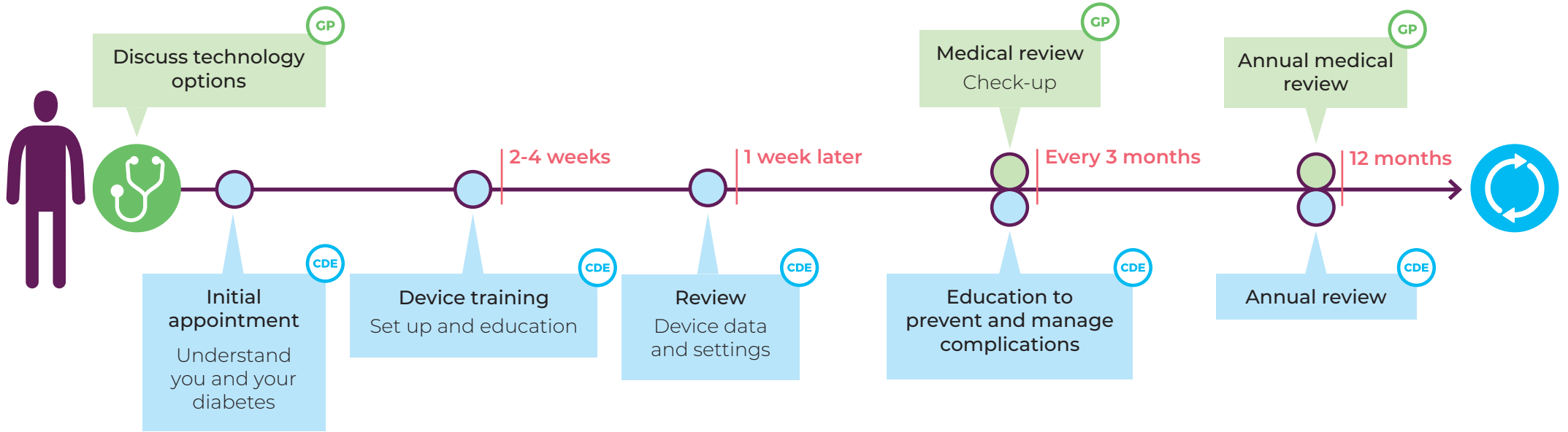




→ You will have ongoing checks with your GP and referrals made to specialist Diabetes Care Team members as needed →



 General Practitioner
  Credentialed Diabetes Educator (CDE)
  Ongoing cycle of care/education

Contact your CDE anytime, including if:

- changes in your personal life
- you need general advice or support
- changes in your health care needs/ medication

Your Diabetes Care Team members

Family and/or Carers	Interpreter
Other support networks	Aboriginal and Torres Strait Islander Health Worker/Practitioner/Elder
Endocrinologist (Adult or Paediatric)	
Dietitian: food and nutrition advice	