

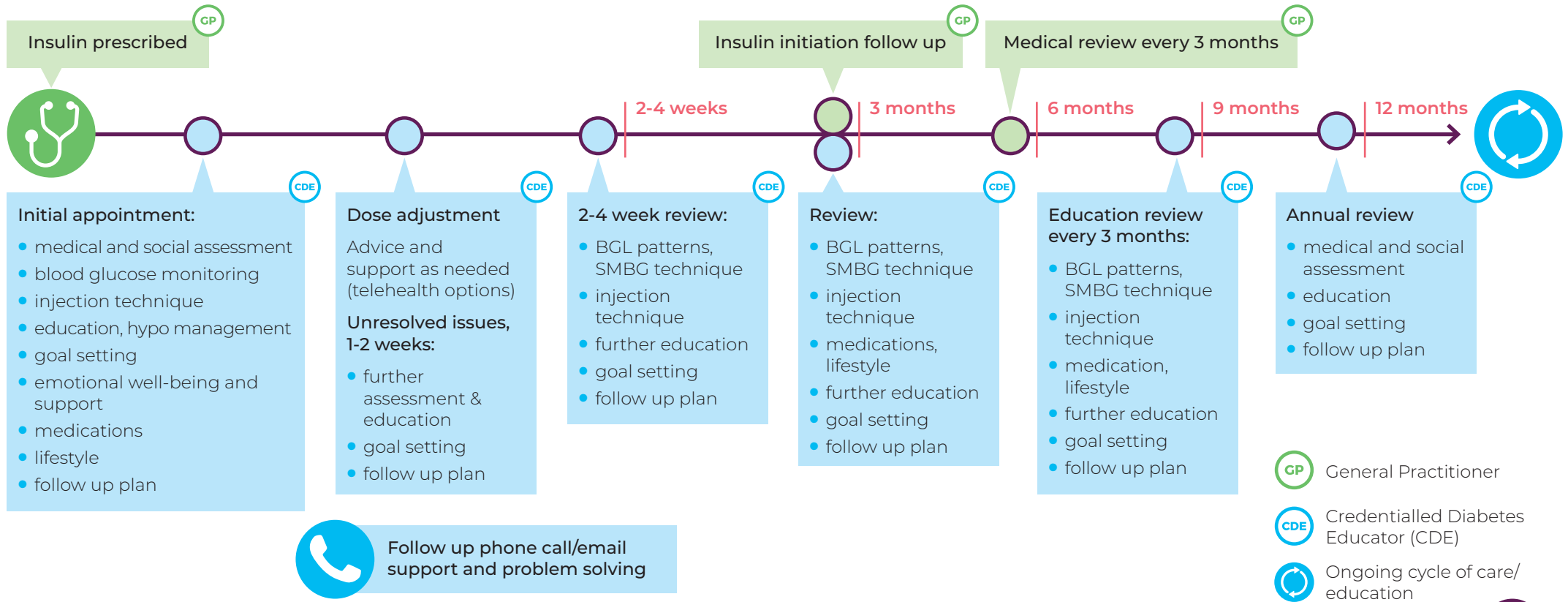


Diabetes Referral Pathway

Type 2 diabetes – insulin initiation and stabilisation



→ Ongoing liaison with referring GP and referrals made to Diabetes Care Team members as appropriate →



Review sooner if:

- previous Hb1Ac above agreed target
- change in management i.e. change to medication/diet/exercise
- preparing for surgery
- symptoms of hypoglycaemia
- change in social situation that may impact management
- sick day management

Diabetes Care Team members

Endocrinologist/Diabetes Physician	Interpreter	Psychologist/Counsellor/Social Worker: mental health consultation
Dietitian: medical nutrition therapy	Aboriginal and Torres Strait Islander Health Worker/Practitioner/Elder	Group education: if appropriate
Primary Care Nurse	Pharmacist	

• ADEA (2017). *Clinical Guiding Principles for Subcutaneous Injection Technique: technical guidelines* Canberra, Australian Diabetes Educators Association.

• RACGP (2020). *Management of type 2 diabetes: A handbook for general practice*. East Melbourne, Australia, The Royal Australian College of General Practitioners.

• Stapleton, N. (2016). *RACGP General Practice Management of Type 2 Diabetes*. Diabetes.