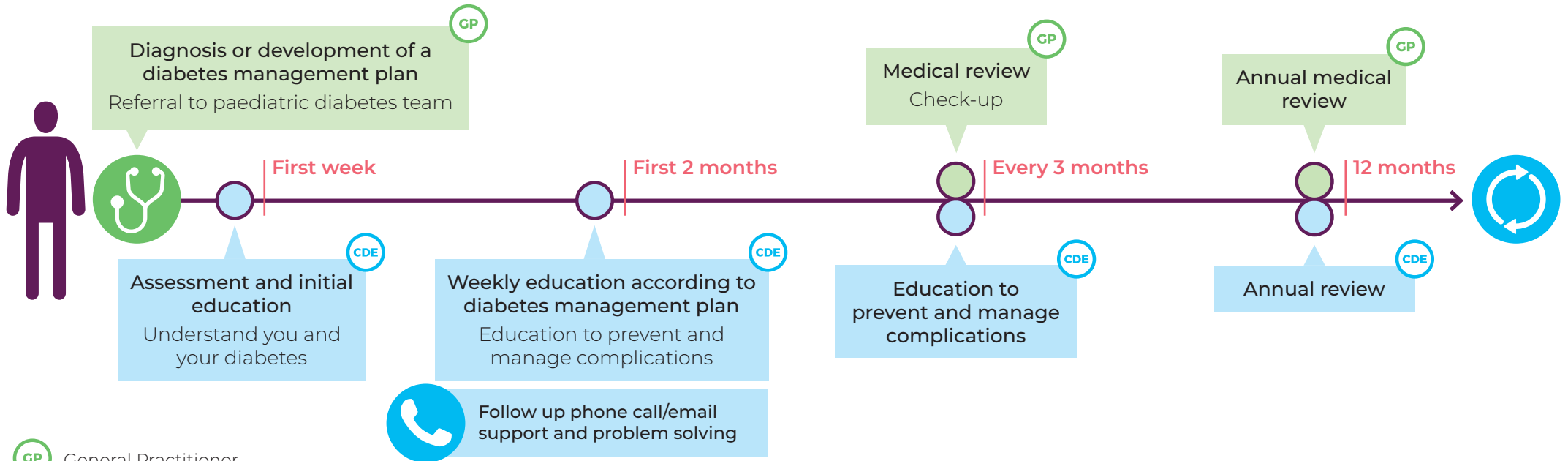




# Your Diabetes Care Pathway For children and adolescents living with type 1 diabetes



→ You will have ongoing checks with your GP/Endocrinologist/Diabetes Physician and referrals made to specialist Diabetes Care Team members as needed →



- General Practitioner
- Credentialed Diabetes Educator (CDE)
- Ongoing education may be required

**Contact your CDE anytime, including if:**

- changes in your personal life
- you need general advice or support
- changes in your health care needs/ medication

## Your Diabetes Care Team members

**Family and/or Carers**

**Other support networks**

**Primary Care Nurse**

**Endocrinologist/Diabetes Physician**

**Dietitian:** food and nutrition advice

**Exercise Physiologist/Physiotherapist:** tailored exercise program

**Podiatrist:** foot education and examination

**Optometrist/Ophthalmologist:** eye examinations (at least every 2 years)

**Psychologist/Counsellor/ Social Worker:** mental health support

**Pharmacist:** advice for taking medications

**Interpreter**

**Aboriginal and Torres Strait Islander Health Worker/Practitioner/Elder**

**Teaching and school staff /school nurse**