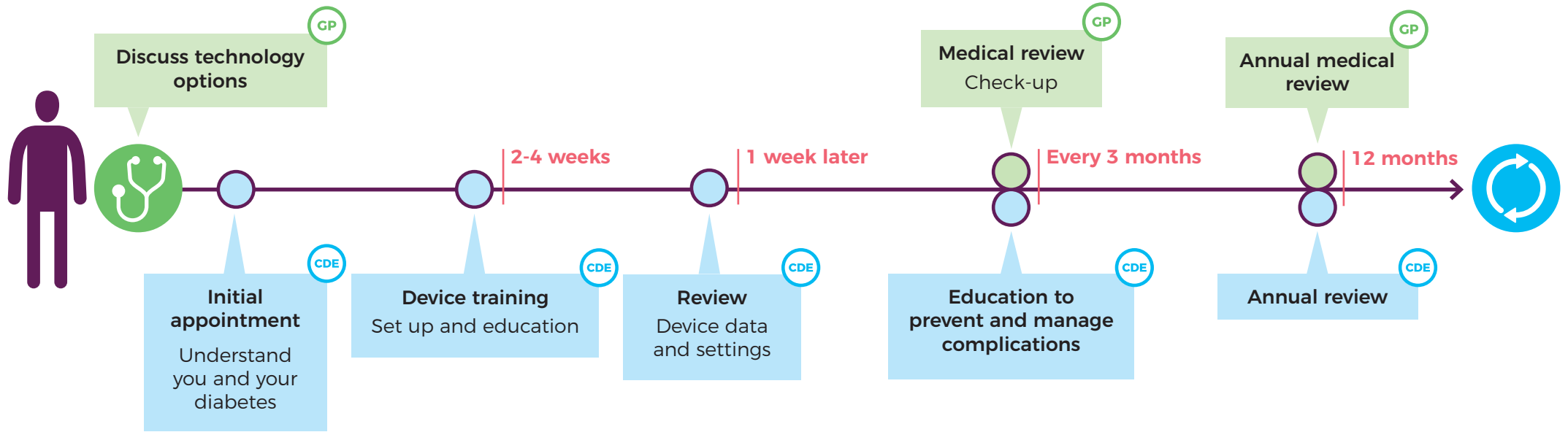




→ You will have ongoing checks with your GP and referrals made to specialist Diabetes Care Team members as needed →



**GP** General Practitioner    **CDE** Credentialed Diabetes Educator (CDE)    Ongoing cycle of care/education

**Contact your CDE anytime, including if:**

- changes in your personal life
- you need general advice or support
- changes in your health care needs/ medication

**Your Diabetes Care Team members**

<b>Family and/or Carers</b>	<b>Interpreter</b>
<b>Other support networks</b>	<b>Aboriginal and Torres Strait Islander Health Worker/Practitioner/Elder</b>
<b>Endocrinologist</b> (Adult or Paediatric)	
<b>Dietitian:</b> food and nutrition advice	